

CIVIA VENUE FRAMESHEET

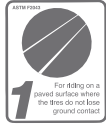
Civia offers stylish, comfortable, affordable bikes that allow people to discover the joy just around the corner. We believe that riding a bike helps you see the world in a new way, that some of life's best things are found right outside your front door, and that life is more than getting from one place to another. Thanks for buying a Civia.

⚠WARNING: CYCLING CAN BE DANGEROUS. BICYCLE PRODUCTS SHOULD BE INSTALLED AND SERVICED BY A PROFESSIONAL MECHANIC. NEVER MODIFY YOUR BICYCLE OR ACCESSORIES. READ AND FOLLOW ALL PRODUCT INSTRUCTIONS AND WARNINGS INCLUDING INFORMATION ON THE MANUFACTURER'S WEBSITE. INSPECT YOUR BICYCLE BEFORE EVERY RIDE. ALWAYS WEAR A HELMET.

Additional Product and Safety instructions can be found at www.civiacycles.com/safety

RETAILER: This framesheet MUST BE provided to the end user.

INTENDED USE



CONDITION 1 CITY TREKKING

Our bikes are designed for riding on a paved surface where the tires are always on the ground.

GEOMETRY CHART

Measurements in mm unless noted

	XS	SM	MD	LG	XL
Recommended Rider Height	5'0"-5'3"	5'3"-5'6"	5'6"-5'9"	5'9"-6'0"	6'0"-6'4"
Toptube Effective	505	535	560	590	615
Seat Tube Length	455	490	530	565	600
Headtube Angle	70.75°	71.25°	72.0°	72.5°	72.5°
Seat Tube Angle	74.5°	74.5°	74°	74°	74°
Bottom Bracket Drop	45	45	65	65	65
Chainstay Length	405	405	440	440	440
Headtube Length	120	150	120	140	165
Fork Length	378	378	405	405	405
Fork Offset	45	45	45	45	45
Wheel Base	976.1	1003.3	1042.8	1068.5	1094.1
Stack	510	540	560	581	605
Reach	364	385	399	423	441
Standover*	692	724	773	804	835
Wheel Size (ETRTO)	26" (559mm)	26" (559mm)	700c (622mm)	700c (622mm)	700c (622mm)

*Standover is measured 50mm in front of the bottom bracket center.

GENERAL SPECIFICATIONS & COMPATIBILITY

Frame Material	Aluminum
Fork Material	Steel
Wheel/Tire Max	XS/SM: 26 x 1.75" max; MD-XL: 700c x 45mm max
Wheel/Tire Alternates	XS/SM: 26 x 1.5" w/fenders; MD-XL: 700c x 38mm w/fenders
Fork Axle to Crown	XS/SM: 378mm; MD-XL: 405mm
Fork Offset	45mm
Headset	1" threaded
Seatpost	27.2 x 350mm length, 0mm offset
Seat Collar	31.8mm
Cable Routing	Standard external
Front Derailleur	31.8mm bottom pull
Bottom Bracket	68 x 113mm English, 1.37 x 24mm threading
Crankset (Max Ring)	48/38/28 triple (ref: Shimano FC-M171) or 46t single
Brakes	Caliper only
Front Hub/Axle	100mm OLD/10mm, threaded
Rear Hub	134mm OLD
Rear Axle Size	10mm, threaded
Derailleur Hanger	Not serviceable, slotted
Rear Rack Mounts	Yes (seatstay & dropout)
Front Rack Mounts	None
Fender Mounts	Front: dropout, brake Rear: dropout, brake, kickstand plate
Bottle Mounts Per Bike	2
Quill Stem Extension	80mm
Quill Stem Angle	-18° rise
Headset Spacers	None
Headset Upper Stack	13mm
Bar Width	XS/SM: 600mm; MD-XL: 620mm
Bar Rise	40mm
Bar Sweep	15°
Crank Arm Length	8-Speed XS/SM: 39t 165mm; MD-XL: 39t 170mm 24-Speed XS/SM: 28t/38t/48t 165mm; MD-XL: 28t/38t/48t 170mm

CIVIA